

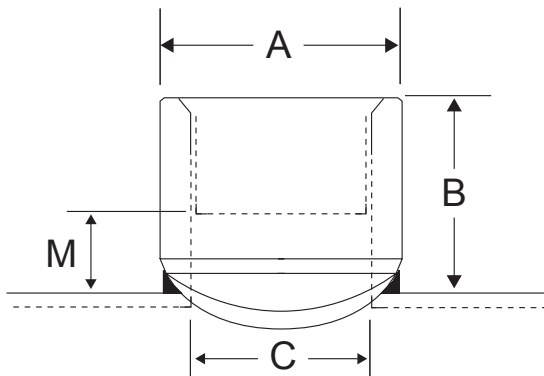


Welded Female Threaded Outlet Fitting

71

Technical Features

- **Sizes Available (Nominal) :**
Pipe run : DN32/1 1/4" to DN200/8"
Outlet : DN8/1/4" to DN100/4"
- **Pressure Data :**
Working Pressure: 21.7 bar (300 psi)*
* Maximum working pressure based on Sch. 40 steel pipe. For other pipe schedules please contact Viking.
- **Connections :** Weldable inlet and threaded female outlet
- **Materials :** Carbon Steel to ASTM A105 with thin coat of rust proof oil
- **Specifications :** Meets NFPA 13 requirements



Welded Female Threaded Outlet Fitting - 71

Physical Data

Reference	Outlet Size mm / in	Header Size Range in	Outlet OD A mm / in	Length B mm / in	Counter-bore C mm / in	Make-UP M mm / in	Weight Kgs / Lbs	Recommended Hole Sizes		
								Outlet Pipe Actual OD mm / in	Max. Hole Size mm / in	Hole Saw Diameter mm / in
71/050125150	15 1/2	1 1/4 - 1 1/2	28.6 1.125	27.0 1.063	17.8 0.70	12.7 0.500	0.08 0.17	21.3 0.840	20.6 0.811	18.0 3/4
71/050150200		1 1/2 - 2								
71/050200250		2 - 2 1/2								
71/050250800		2 1/2 - 8								
71/075125150	20 3/4	1 1/4 - 1 1/2	34.9 1.375	28.6 1.125	22.9 0.900	12.7 0.500	0.12 0.26	26.7 1.050	25.4 1.000	24.0 15/16
71/075150200		1 1/2 - 2								
71/075200250		2 - 2 1/2								
71/075250800		2 1/2 - 8								
71/100125150	25 1	1 1/4 - 1 1/2	40.5 1.600	31.86 1.250	29.1 1.145	12.7 0.500	0.13 0.29	33.4 1.315	33.4 1.315	32.0 1 1/4
71/100150200		1 1/2 - 2								
71/100200250		2 - 2 1/2								
71/100250300		2 1/2 - 3								
71/100300400	3 - 4									
71/100500800	5 - 8									
71/125125150	32 1 1/4	1 1/4 - 1 1/2	49.5 1.950	34.9 1.375	37.8 1.490	12.7 0.500	0.19 0.42	42.2 1.660	43.5 1.713	42.0 1 5/8
71/125150200		1 1/2 - 2								
71/125200250		2 - 2 1/2								
71/125250300		2 1/2 - 3								
71/125300400		3 - 4								
71/125500800	5 - 8									



Welded Female Threaded Outlet Fitting

71

Welded Outlets

Welded Female Threaded Outlet Fitting - 71

Physical Data (cont.)

Reference	Outlet Size mm / in	Header Size Range in	Outlet OD A mm / in	Length B mm / in	Counter-bore C mm / in	Make-UP M mm / in	Weight Kgs / Lbs	Recommended Hole Sizes		
								Outlet Pipe Actual OD mm / in	Max. Hole Size mm / in	Hole Saw Diameter mm / in
71/150150	40 1 1/2	1 1/2	55.9 2.203	41.3 1.625	40.9 1.610	22.2 0.875	0.22 0.47	48.6 1.900	49.0 1.929	48.0 1 7/8
71/150200		2								
71/150250		2 1/2								
71/150300400		3 - 4								
71/150500800		5 - 8								
71/200200	50 2	2	68.6 2.703	44.5 1.750	52.5 2.067	22.2 0.875	0.38 0.57	60.3 2.375	60.6 2.386	58.0 2 1/4
71/200250		2 1/2								
71/200300		3								
71/200400		4								
71/200500		5								
71/200600		6								
71/200800		8								
71/250250	65 2 1/2 (76.1 OD)	2 1/2	83.50 3.290	54.0 2.215	62.7 2.469	28.6 1.125	0.55 1.15	76.1 3.000	73.5 2.894	72.0 2 7/8
71/250300		3								
71/250400		4								
71/250500		5								
71/250600		6								
71/250800		8								
71/300300	80 3	3	98.0 3.861	63.5 2.500	77.9 3.068	38.1 1.500	0.77 1.70	88.9 3.500	87.0 3.425	85.0 3 3/8
71/300400		4								
71/300500		5								
71/300600		6								
71/300800		8								
71/400400	100 4	4	125.2 4.933	76.2 3.000	102.3 4.026	50.8 2.000	1.32 2.80	114.3 4.500	113.3 4.461	110.0 4 3/8
71/400500		5								
71/400600		6								
71/400800		8								